

LANDSCAPE DESIGN PORTFOLIO

qualifications and project experience

ACTIVE ADULT | HOSPITALITY | HIGH-DENSITY RESIDENTIAL | RETAIL

714.202.0094

www.landstudio360.com

333 el camino real studio 200 | tustin, ca 92780

3597 e monarch sky lane, studio f-240 | meridian, id 83646

Hello!

We're a dynamic design studio offering a comprehensive spectrum of services in landscape architecture, planning, and design. Led by our two partners with over 45 years of collective experience, we take pride in providing a highly responsive, collaborative approach as we integrate aesthetic design, functional strategy, and innovative ideas into environments that strengthen our clients' brands and enhance people's experiences.

You'll love working with us.

Guaranteed.



Big firm experience. Small firm attention.

Agile, innovative, and capable of realizing projects at all scales with a passionate commitment to their success.

SERVICES OFFERED

Amenity/Furniture Design
Budget Development
Community Consultation
Conceptual Design
Construction Administration
Construction Documentation

Design Development
Design Guidelines and Reports
Entitlement
Environmental Graphics
Feasibility Studies
Planning Documents

Planting and Irrigation Design
Podium and Roof Gardens
Project Leadership
Reimaging / Reinvestment
Urban Design
Visioning and Programming

LS360 LIVES OUT ITS VALUES

CONNECTION - Our focus is always on building long-term relationships with our clients based on trust, caring, understanding, and a 360-degree openness to all ideas and perspectives.

HOLISTIC - We obsess over taking a holistic, 360-degree view of our design project by incorporating perspectives and ideas from around the world. Our vision spans beyond the periphery.

CLEVER - As master of the 360-pivot, our open minds are always ready to assess, adapt, and adjust to design challenges, large and small. We pride ourselves on having sharp wits and pliable minds.

INTEGRITY - Our 360-degree moral compass always shows us true north. Our relationships with clients, partners, and team members are built on foundations of trust and honesty.

LEADERSHIP - We see the 360-degree picture of every project and consider the needs and impact of all the collaborative disciplines involved; we treat every project as if we're the prime consultant.

STUDIO LEADERSHIP



DAVID Ling | RLA
Partner | Design Principal

As Design Principal, David's primary focus at LandStudio360 is to create and enhance environments through the process of "placemaking." With over 25 years of experience interweaving aesthetics, functionality, environmental sustainability, socio-economic development, and client brand promotion into holistic experiences, he delivers exciting and exceptional projects for his clientele in retail, commercial, mixed-use residential, master planned communities, recreational parks, themed environments, and destination resorts.

David's previous roles include Senior Principal at LandArcWest, Principal at Lifescapes International, and Project Director at FORMA Design, and has designed projects in California, across the US, and abroad in China, India, Egypt, and Saudi Arabia. Having traveled to over 30 countries on 6 continents, he brings a wealth of aesthetic knowledge, creativity, and design skills to bring each project to life.



ALEX Polen | RLA
Partner | Managing Principal

With over 20 years of experience, Alex brings creative savvy, leadership, and strong professional relationship-building capabilities to LandStudio360. As Managing Principal, he takes an active involvement in all project aspects: from conceptual programming, coordinating interdisciplinary teams, organizing construction document production and agency submittals, all the way through construction observation – as well as managing the financial, technical, and business components of the firm.

Taking the lead on major retail, urban mixed-use, high density residential, and office projects, he ushers in creativity and liveliness to each design. His previous experience includes serving as Senior Principal at LandArcWest as well as involvement with notable projects at EPT Design. Actively involved in the profession, Alex has held the Vice Chair position on the Placemaking Initiative Group for Urban Land Institute's Orange County & the Inland Empire and has participated as a design juror at his alma mater, Cal Poly Pomona.

STUDIO LEADERSHIP



DANIEL Miller | RLA
Associate Project Manager

In his 12 years of professional experience Daniel has overseen numerous projects of various scales and project types from initial conception through Construction Documentation while ensuring LS360 and our team maintain the highest levels of coordination and proactiveness. Daniel balances technical savviness with a high level of creativity. His project experience has ranged from technical, site-based design to large-scale masterplanning and urban design efforts. Daniel is an integral member in the efforts of ensuring client satisfaction and project completion are maintained as LS360's top priorities.

Daniel has been with LS360 for close to 8 years and now oversees LandStudio360's Idaho-based operations. He is a registered Landscape Architect and LEED AP. He previously completed his undergraduate studies (BS in Landscape Architecture) at Cal Poly Pomona and earned a Master's of Urban Design at the University of California, Berkeley.



KIRK Tani
Director of Construction

In his 24 years of practice, Kirk has been involved in all facets of projects from conceptual design through construction services. His technical expertise is vital in the successful implementation of our projects, with his primary focus on design feasibility and constructability and project suitability. With a high-level understanding of construction practices, Kirk is a vital piece in ensuring that the drawings LS360 produces are clear, accurate, and thorough while the back-end installation is done right.

Kirk has worked for several high profile design firms and has been heavily involved in large scale renovations, new ground-up and podium design projects. He holds an undergraduate degree from Cal Poly San Luis Obispo.

ACTIVE ADULT

qualifications and project experience

ACTIVE ADULT | HOSPITALITY | HIGH-DENSITY RESIDENTIAL | RETAIL

Select Works From Our

ACTIVE ADULT PORTFOLIO



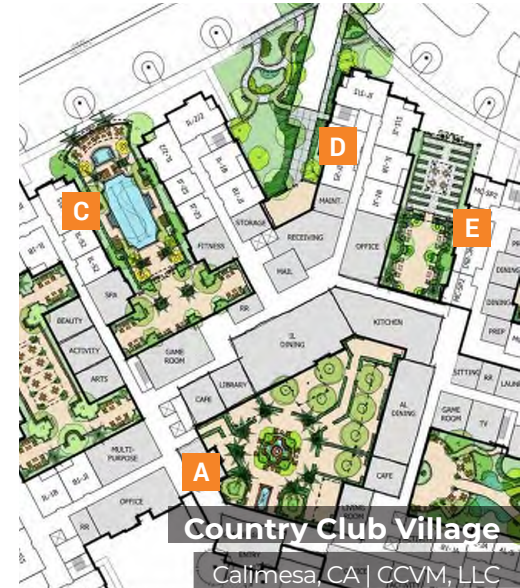
Audie Murphy Ranch
Menifee, CA | Brookfield



Portola Springs
Irvine, CA | Irvine Company



Four Seasons
Beaumont, CA | K. Hovnanian



Country Club Village
Calimesa, CA | CCVM, LLC



27 Seventy Five Mesa Verde
Las Vegas, NV | Las Vegas Sands, LLC



Valencia Terrace
Corona, CA | Kisco



Aquabella
Moreno Valley, CA | Highland Fairview

VALENCIA TERRACE

Corona, CA

Kisco





FOUR SEASONS AT BEAUMONT

Beaumont, CA

K. Hovnanian



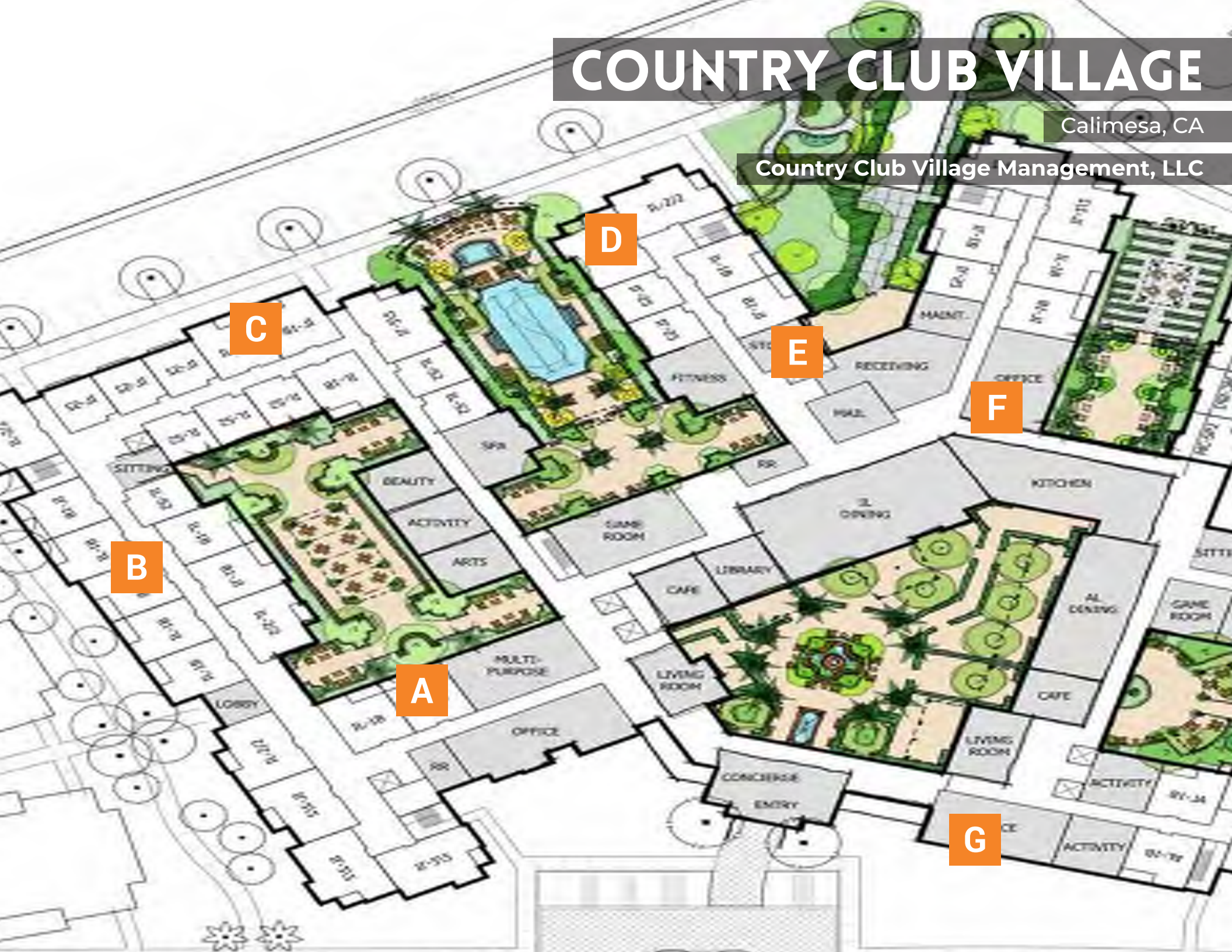


FOUR SEASONS AT BEAUMONT

COUNTRY CLUB VILLAGE

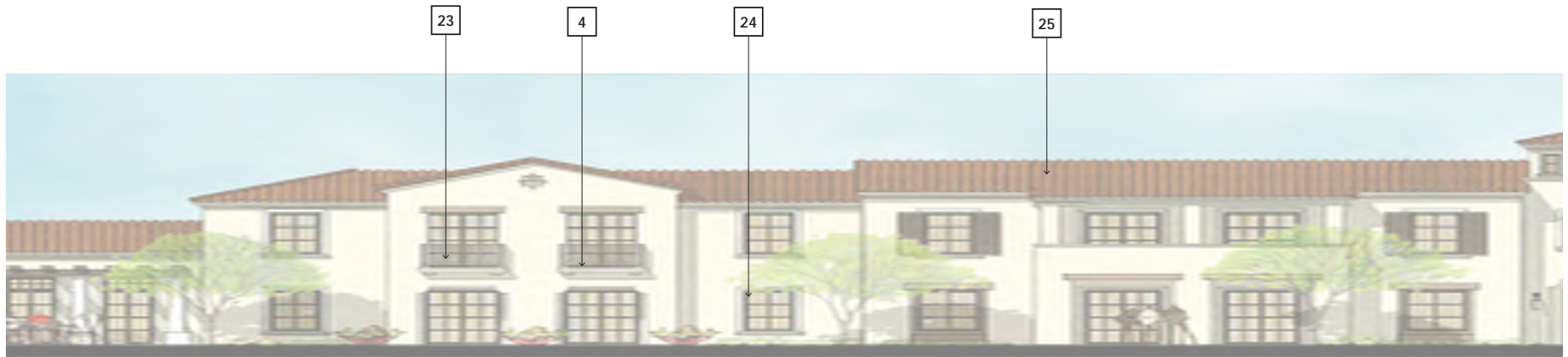
Calimesa, CA

Country Club Village Management, LLC

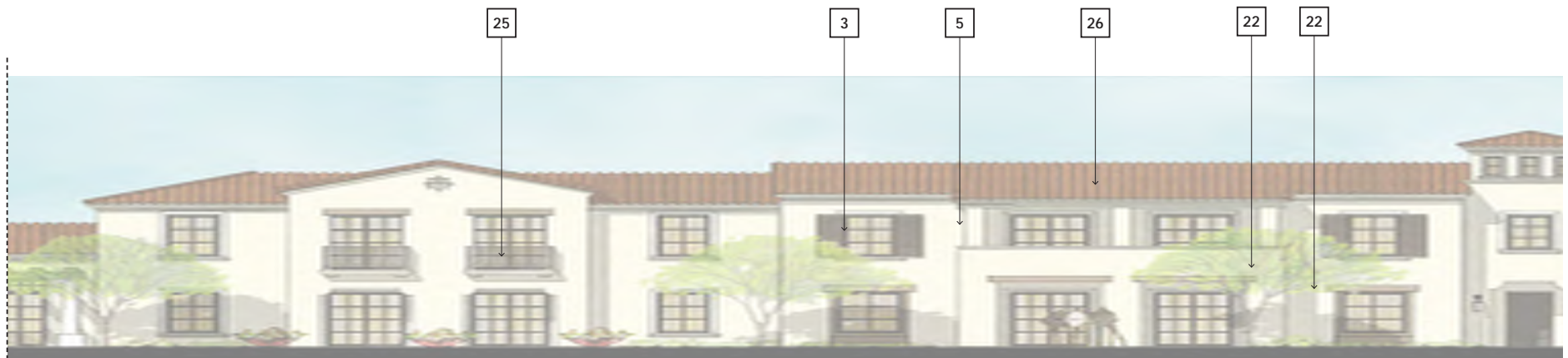




SOUTH ELEVATION A



SOUTH ELEVATION B1



SOUTH ELEVATION B2

AUDIE MURPHY RANCH

Menifee, CA

Brookfield Residential





27 SEVENTY FIVE MESA VERDE

Costa Mesa, CA

UDR



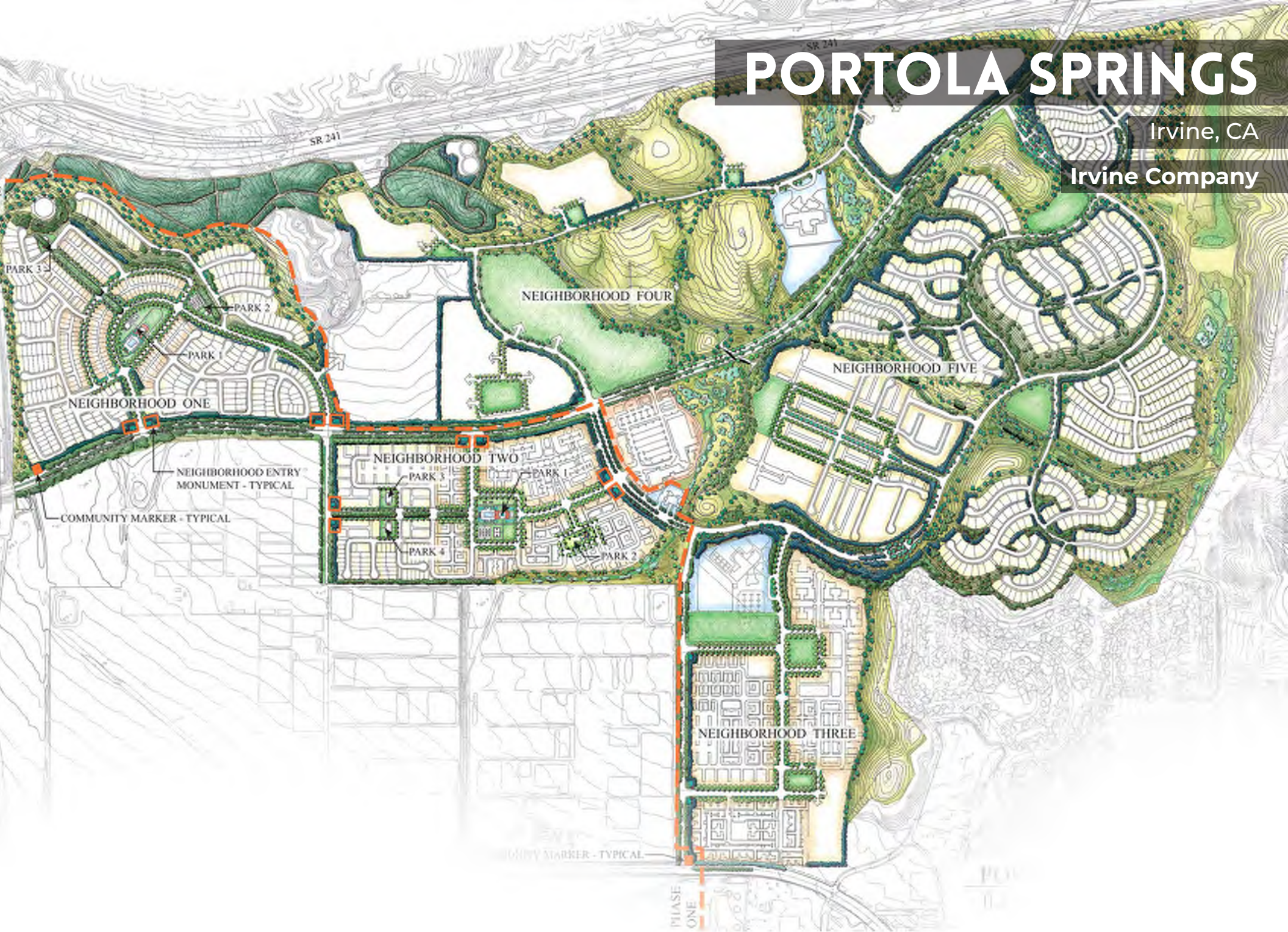


27 SEVENTY FIVE MESA VERDE

PORTOLA SPRINGS


Irvine, CA

Irvine Company





PORTOLA SPRINGS

A modern building with a glass facade and a series of waterfalls cascading down its side. The building is illuminated from within, and the waterfalls are a prominent feature. The sky is a clear, pale blue.

LandStudio360
LandscapeArchitecture

HOSPITALITY

qualifications and project experience

ACTIVE ADULT | HOSPITALITY | HIGH-DENSITY RESIDENTIAL | RETAIL

Select Works From Our

HOSPITALITY PORTFOLIO



THE WATERFRONT BEACH RESORT

Huntington Beach, CA

WATG | The Mayer Corp





THE WATERFRONT BEACH RESORT

HYATT HOUSE

Oxnard, CA

Architects Orange | Brighton Management





HILTON HOME 2 - DTLA

Los Angeles, CA

BGA, PLLC | UAP





SEACREST OCEANFRONT HOTEL

Pismo Beach, CA

CCH





RITZ CARLTON HOTEL

Marassi, Egypt

Emaar Misr



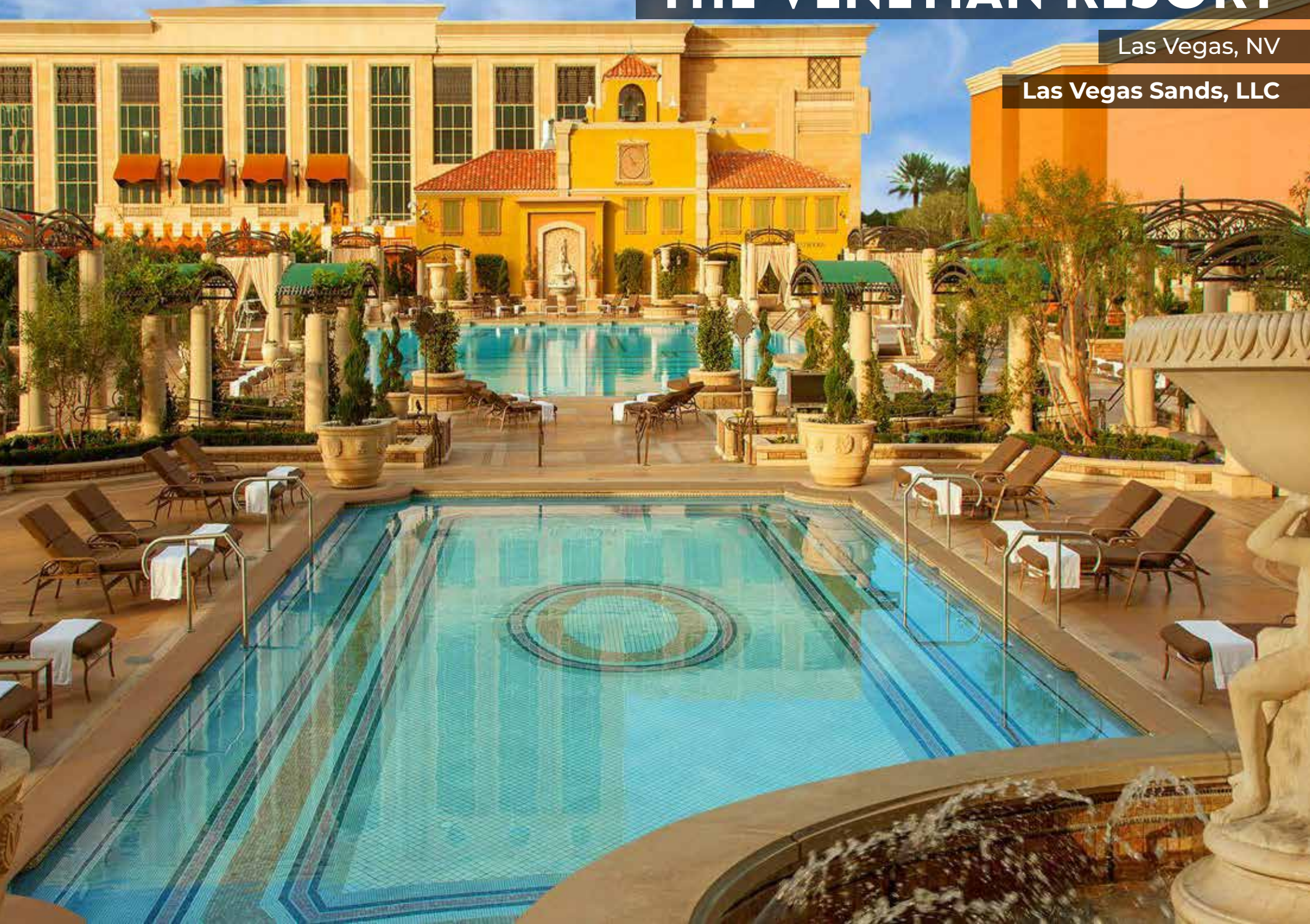


RITZ CARLTON HOTEL

THE VENETIAN RESORT

Las Vegas, NV

Las Vegas Sands, LLC





THE VENETIAN RESORT

TAHITI VILLAGE RESORT

Las Vegas, NV

Consolidated Resorts





TAHITI VILLAGE RESORT

MIRAVAL ARIZONA RESORT AND SPA

Tucson, AZ

Miraval Group





MIRAVAL ARIZONA RESORT AND SPA

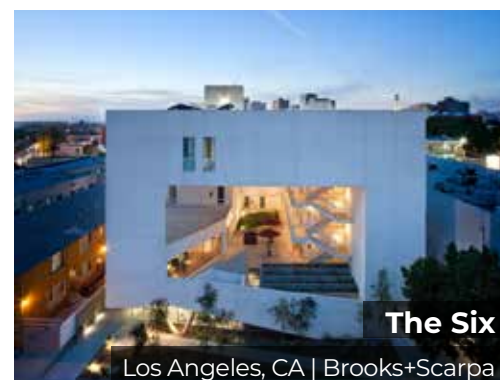
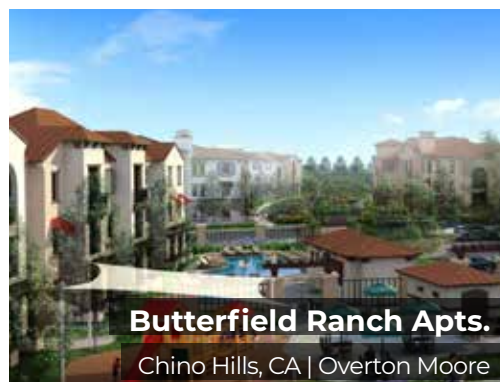
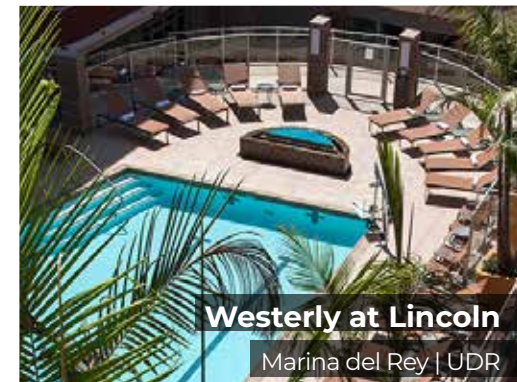
HIGH-DENSITY RESIDENTIAL

qualifications and project experience

ACTIVE ADULT | HOSPITALITY | HIGH-DENSITY RESIDENTIAL | RETAIL

Select Works From Our

HIGH-DENSITY RESIDENTIAL PORTFOLIO



BEACH AND OCEAN

Huntington Beach, CA

Architects Orange | UDR





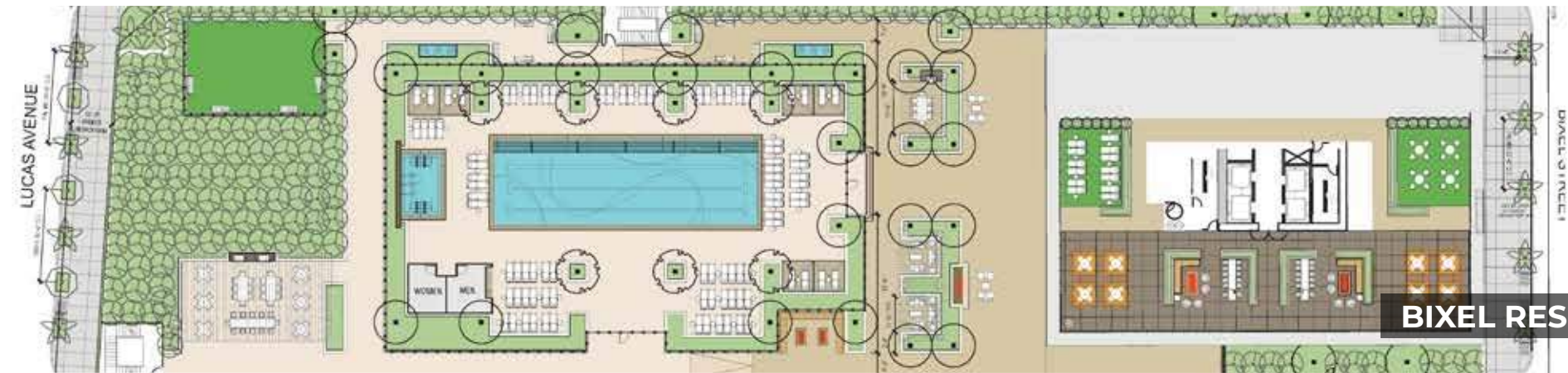


BIXEL RESIDENCES

Los Angeles, CA

Humphreys & Partners | UAP





BIXEL RESIDENCES

MONROVIA MIXED-USE

Monrovia, CA

Humphreys & Partners | Fifield





THE SIX

Los Angeles, CA

Brooks+Scarpa | Skid Row Housing Trust





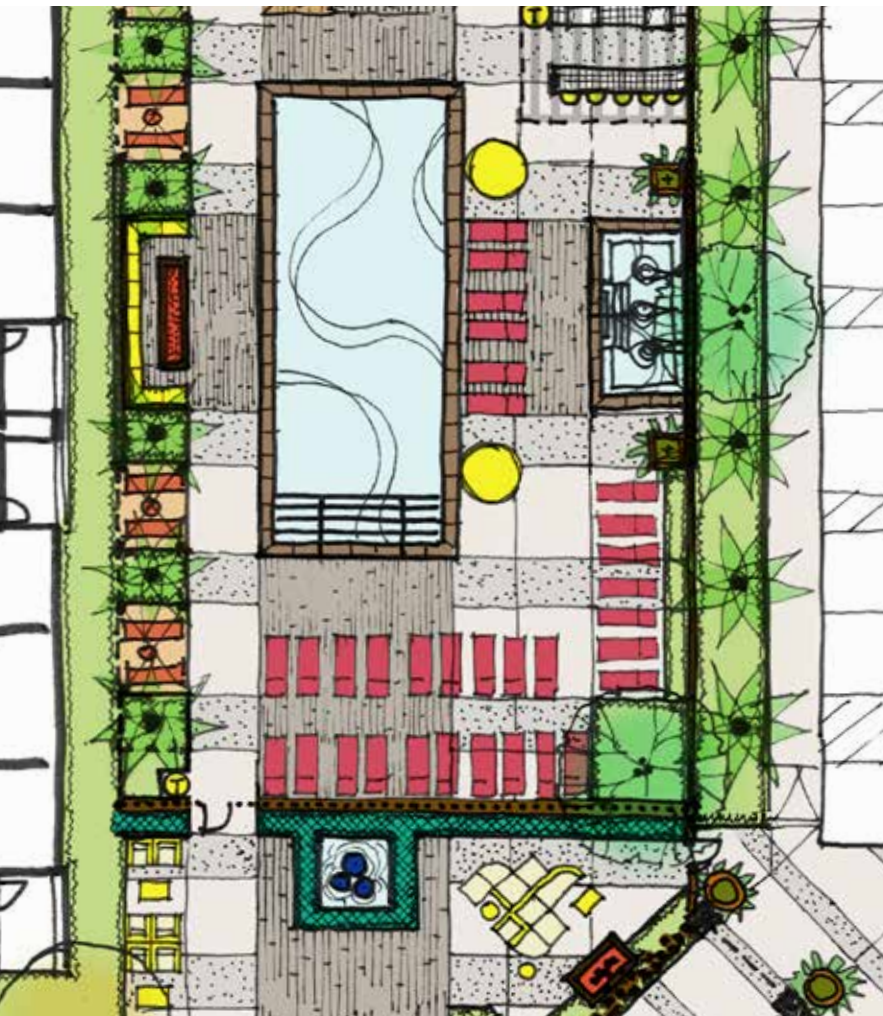
THE SIX

MISSION LOFTS

Riverside, CA

KTGY Group | REALM





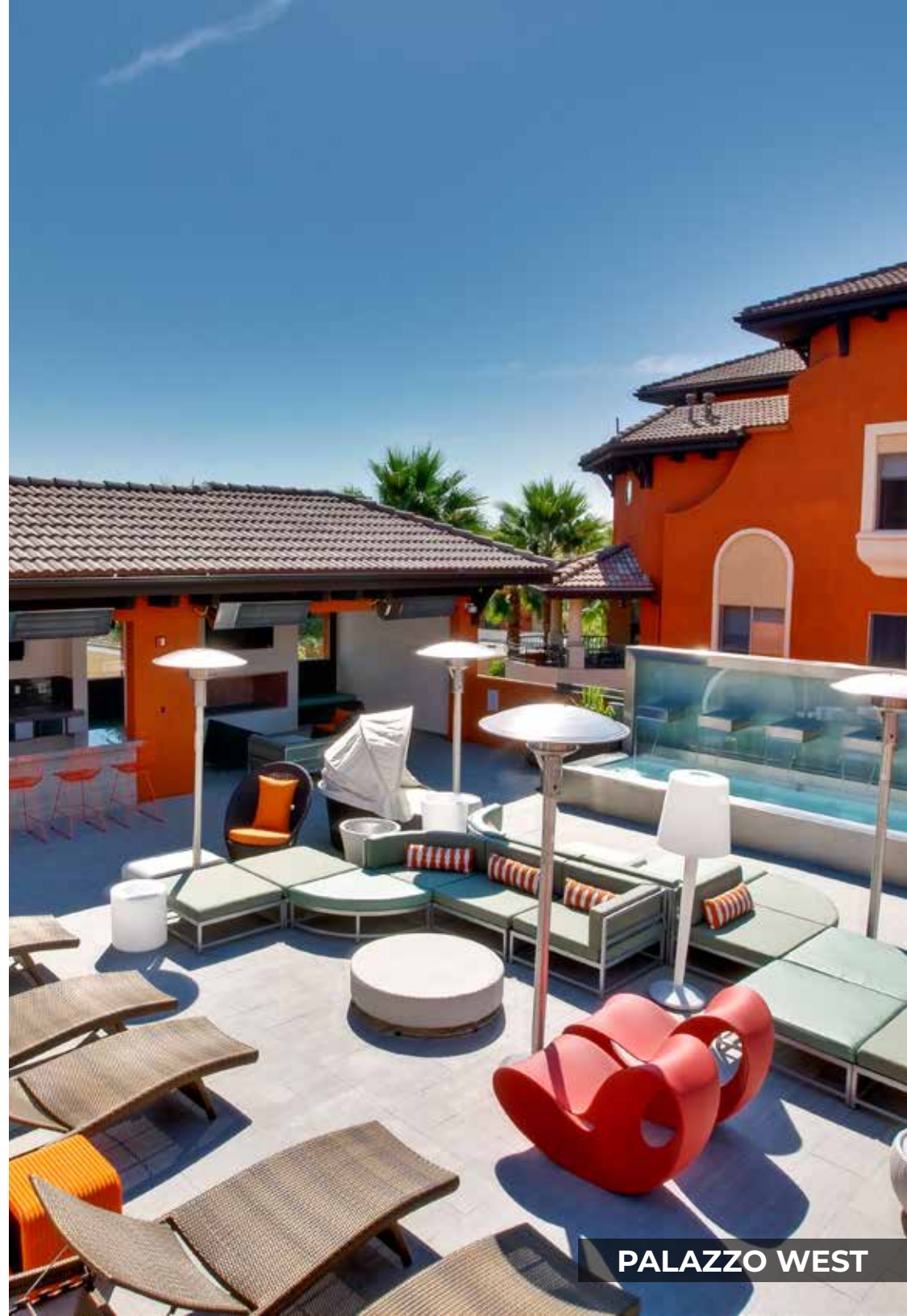
MISSION LOFTS

PALAZZO WEST

Los Angeles, CA

VTBS Architecture | Aimco





PALAZZO WEST

FASHION DISTRICT RESIDENCES

Los Angeles, CA

Humphreys & Partners | REALM





FASHION DISTRICT RESIDENCES

3400 AVENUE OF THE ARTS

Costa Mesa, CA

M.W. Steele Group | Aimco



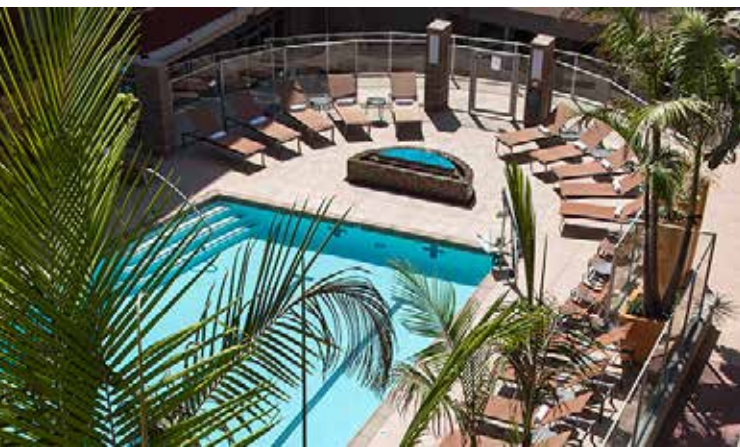


THE WESTERLY ON LINCOLN

Marina del Rey, CA

Kephart | UDR





THE WESTERLY ON LINCOLN

VELOCITY APARTMENTS

Fullerton, CA

TCA Architects | Red Oak Investments







SKYE LAGUNA NIGUEL

Laguna Niguel, CA

TCA Architects | United American Properties





SKYE LAGUNA NIGUEL

BUTTERFIELD RANCH APARTMENTS

Chino Hills, CA

Architects Orange | Overton Moore Properties

71 FWY

EAST RIDGE

STERLING
DOWN APT.

PINEHURST
PUBLIC PARK

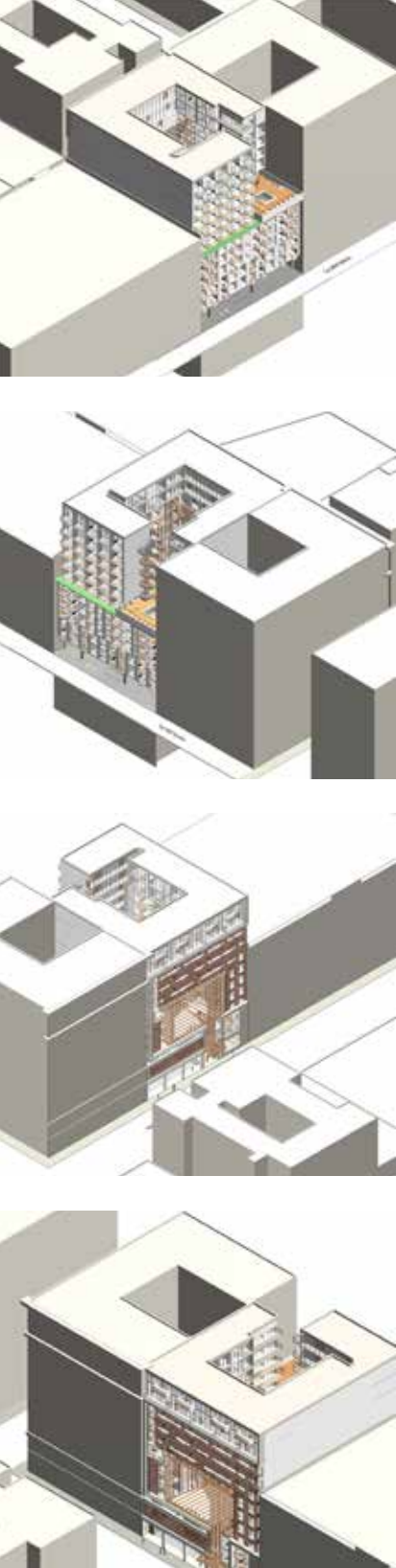
BUTTERFIELD RANCH RD.

PINEHURST
HILLS

PINEHURST



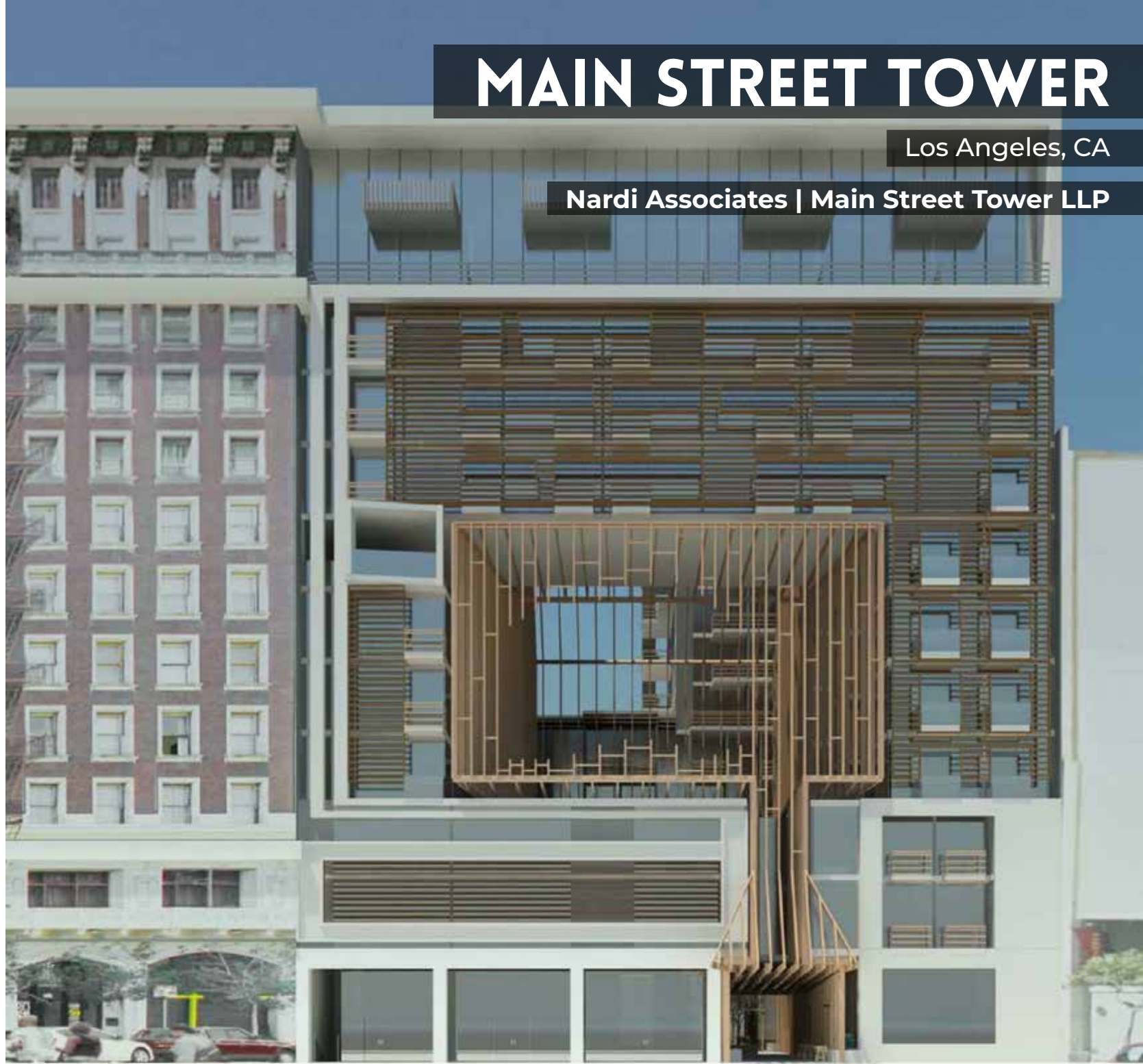


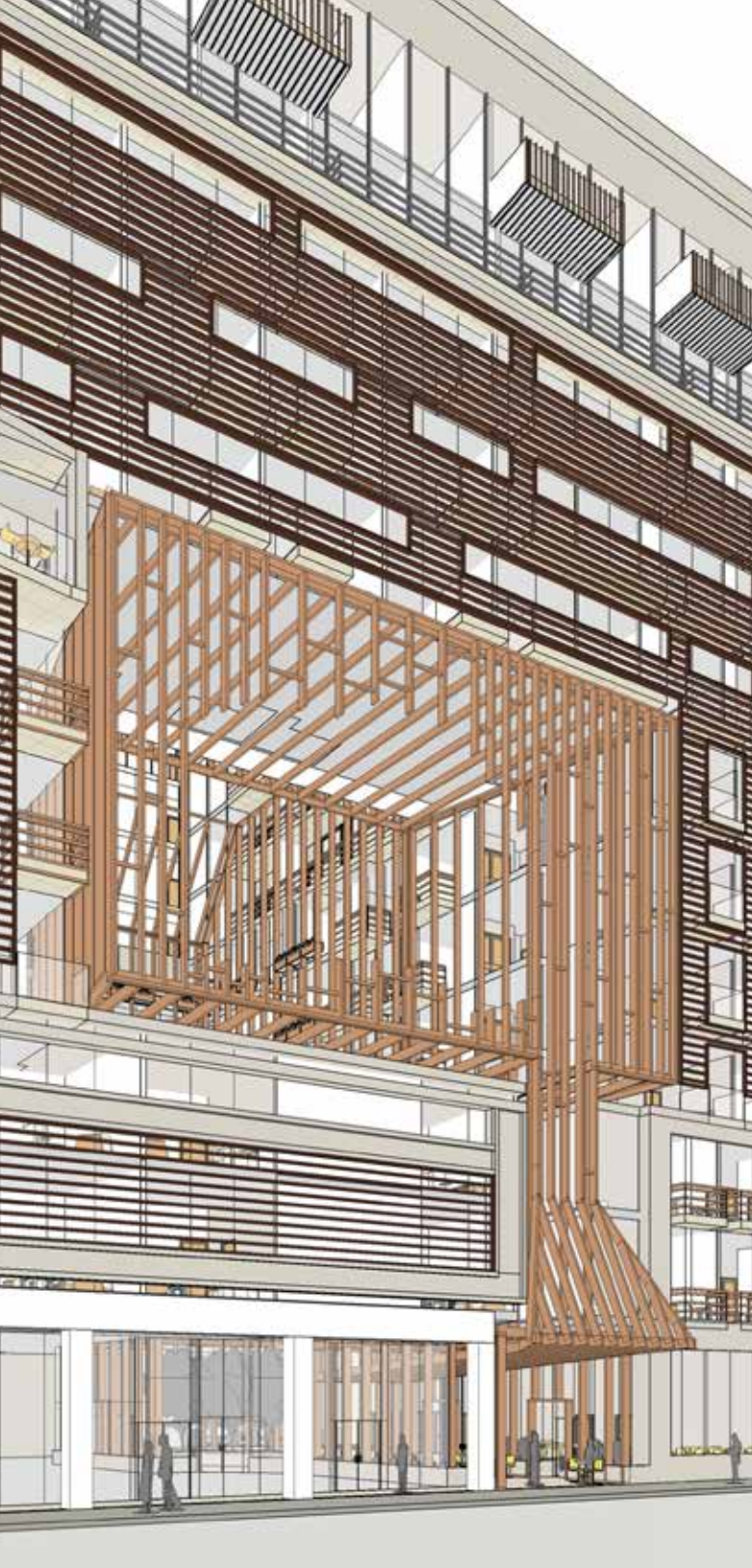


MAIN STREET TOWER

Los Angeles, CA

Nardi Associates | Main Street Tower LLP



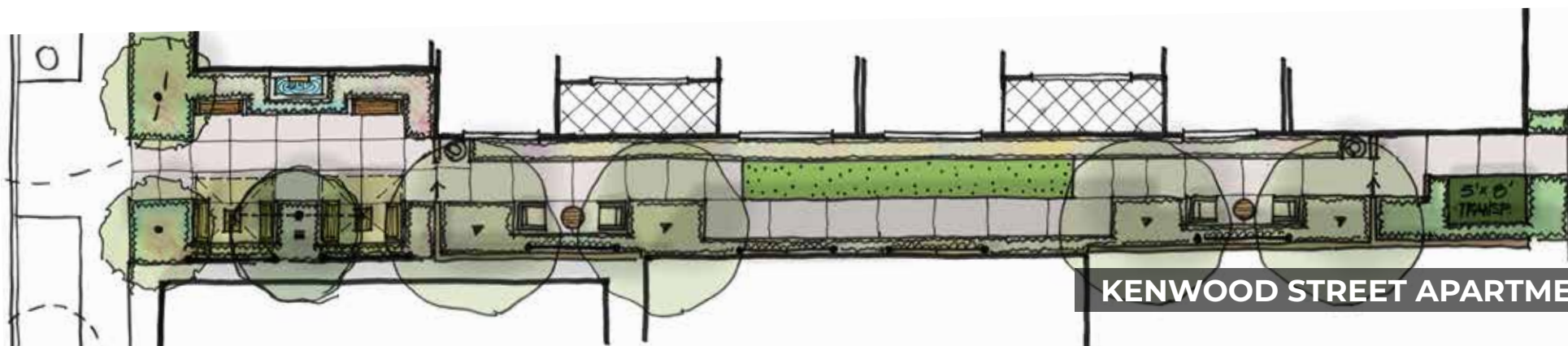


KENWOOD STREET APARTMENTS

Glendale, CA

RC Architecture | Westlife





KENWOOD STREET APARTMENTS

27 SEVENTY FIVE MESA VERDE

Costa Mesa, CA

Newman Garrison + Partners | UDR





27 SEVENTY FIVE MESA VERDE

RETAIL

qualifications and project experience

ACTIVE ADULT

HOSPITALITY

HIGH-DENSITY RESIDENTIAL

RETAIL

714.202.0094

www.landstudio360.com

333 el camino real studio 200 | tustin, ca 92780

Select Works From Our

RETAIL PORTFOLIO

* denotes project completed at previous firm



Starbucks

Downtown Disney, CA | Starbucks



Crystal Cove

Corona Del Mar, CA | ICRP



Westcliff Plaza

Newport Beach, CA | ICRP



Edinger Plaza

Huntington Beach, CA | Stockbridge



The Marketplace*

Irvine, CA



The Village at University Park*

Palm Desert, CA



Flamingo Plaza*

Summerlin, NV



Grand Plaza*

San Marcos, CA



Relands Town Center*

Redlands, CA



Laguna Heights Marketplace*

Laguna Niguel, CA



Ocean Ranch Village*

Laguna Niguel, CA



The Village at Orange*

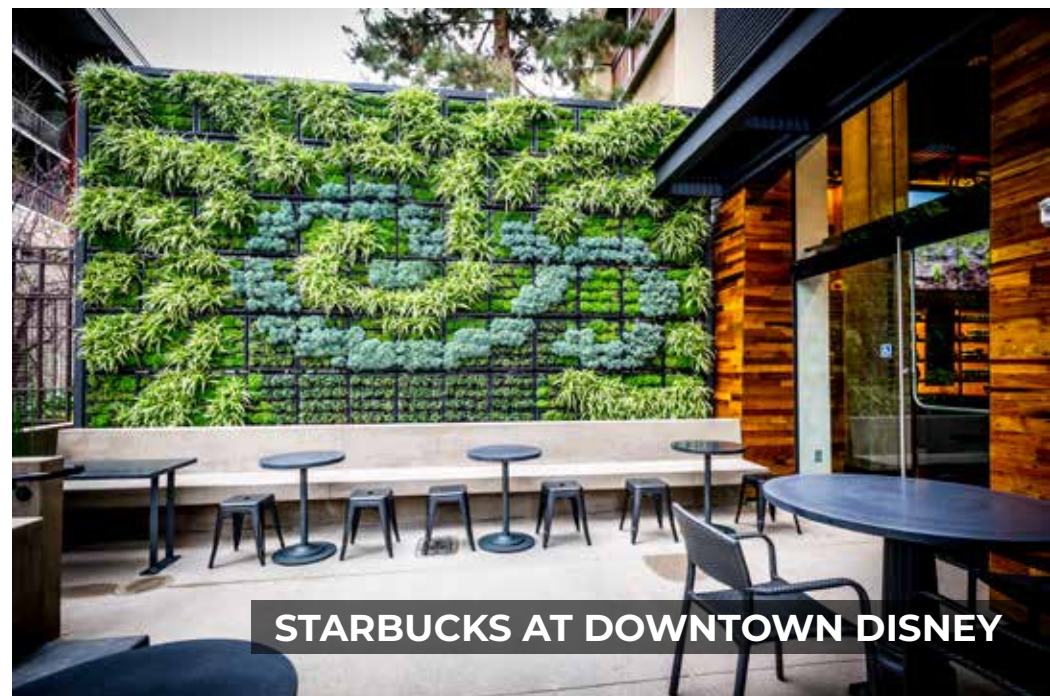
Orange, CA

STARBUCKS AT DOWNTOWN DISNEY

Anaheim, CA

Starbucks | Architects Orange





UNIVERSITY CENTER

Irvine, CA

ICRP





UNIVERSITY CENTER

NORTHPARK PLAZA

Irvine, CA

ICRP





THE SHOPS AT DOS LAGOS

Corona, CA

Cypress Equities, LLC





STARBUCKS AT DISNEY SPRINGS

Orlando, FL

Starbucks | Architects Orange





STARBUCKS AT DISNEY SPRINGS

PARKVIEW CENTER

Irvine, CA

ICRP





PARKVIEW CENTER

OAK CREEK SHOPPING CENTER

Irvine, CA

ICRP





OAK CREEK SHOPPING CENTER

THE SQUARE

Irvine, CA

ICRP





THE SQUARE

CRYSTAL COVE SHOPPING CENTER

Corona del Mar, CA

ICRP





CRYSTAL COVE SHOPPING CENTER

THE MARKET PLACE

Irvine / Tustin, CA

ICRP





THE MARKET PLACE

WESTCLIFF PLAZA

Newport Beach, CA

ICRP



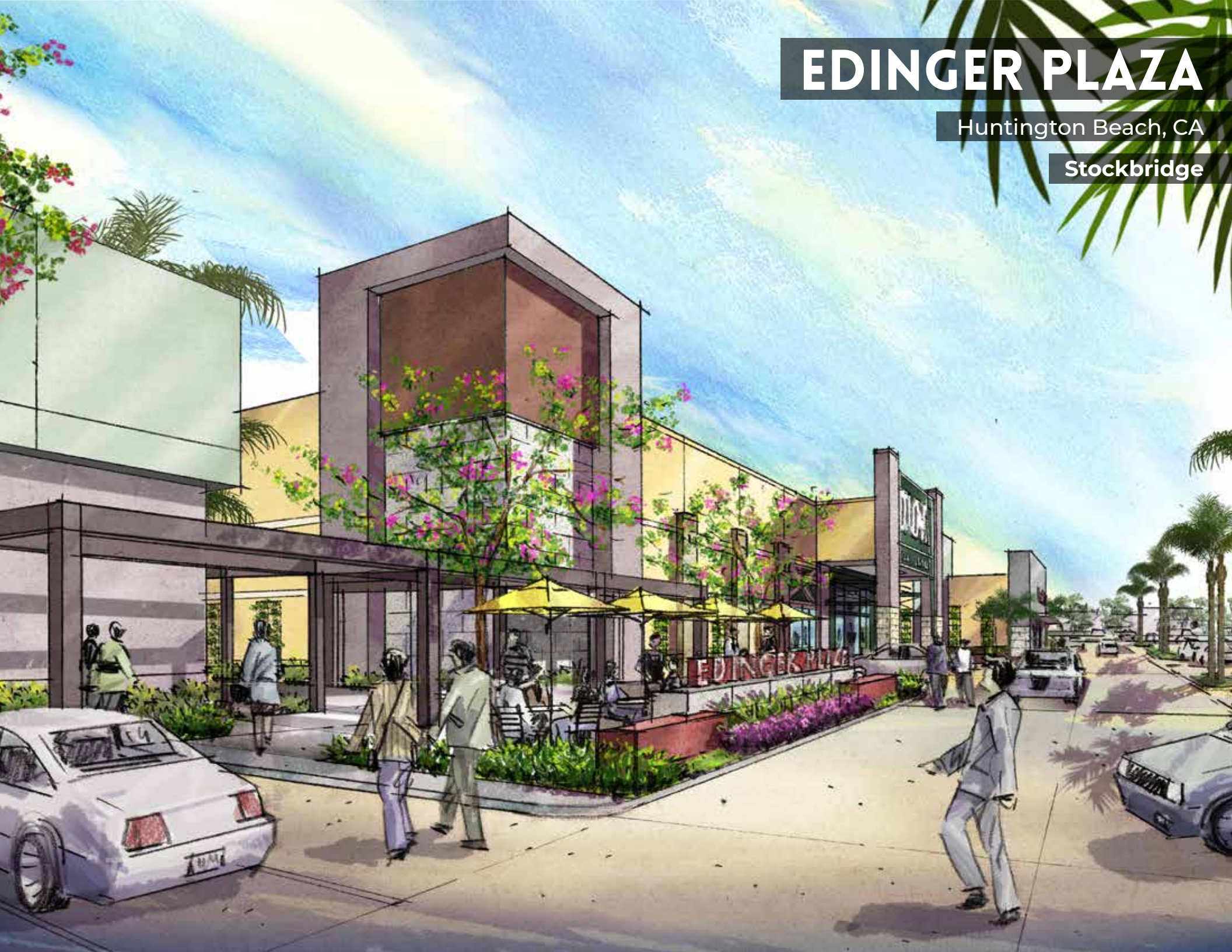


WESTCLIFF PLAZA

EDINGER PLAZA

Huntington Beach, CA

Stockbridge







LandStudio360
LandscapeArchitecture

714.202.0094

www.landstudio360.com

333 el camino real studio 200 | tustin, ca 92780